

ORDER REFERENCE

PROJECT: TYPICAL INCLINATOR LX
TRACTION DRIVE

GENERAL CONTRACTOR: -

EQUIPMENT INSTALLED BY:



SPECIFICATIONS

MODEL: INCLINATOR LX - 200

LANDINGS: 3

CODE(S): 4

CAPACITY: 950#

SPEED: AT 40 F.P.M.±4

SUSPENSION (3) 5mm (6mm-OD) 7x19W ROPES
MEANS: w/CLEAR POLYURETHANE JACKET

CAR CONSTRUCTION: 3/4" HARDWOOD UNFINISHED

NOTE: ALL MANUFACTURER SUPPLIED CAR AND EQUIPMENT OPTIONS ARE NOTED ON THE CONFIRMING ORDER SHEET.

DISCLAIMER: ONCE DRAWINGS HAVE BEEN APPROVED, SIGNED AND WITHIN 5 DAYS OF PRODUCTION, THE CUSTOMER WILL BEAR ALL RESPONSIBILITY AND LIABILITY OF FINISHED UNIT.

PLEASE REFER ANY QUESTION TO YOUR SALES REPRESENTATIVE

APPROVED

UNAPPROVED

SIGNATURE

DATE

DWG VIEW

COVER SHEET

PART NUMBER

80205327

REV. DATE

-

-

-

DRAWING TITLE

TYPICAL LX

DRAWING NO.

-

PAGE:

1/5

DRAWN BY:

J.PETTYJOHN

DWG. DATE

02/25/2008

JOB OR APP.#

-

DEALER P.O.#

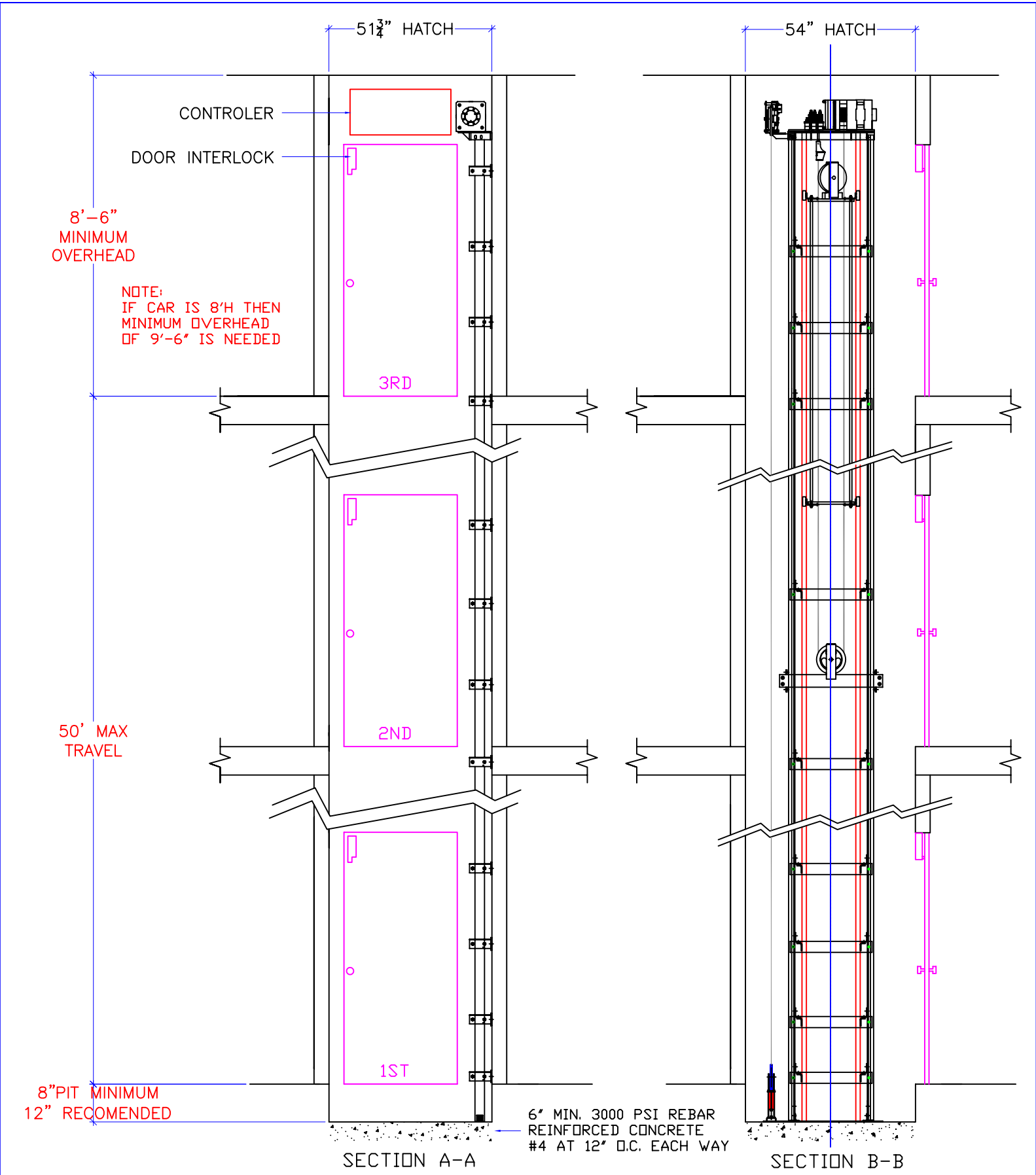
-

DWG. SCALE

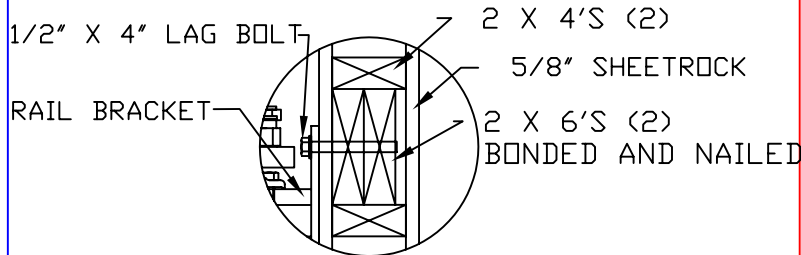
1:24

REV. LEVEL(1-3)

-

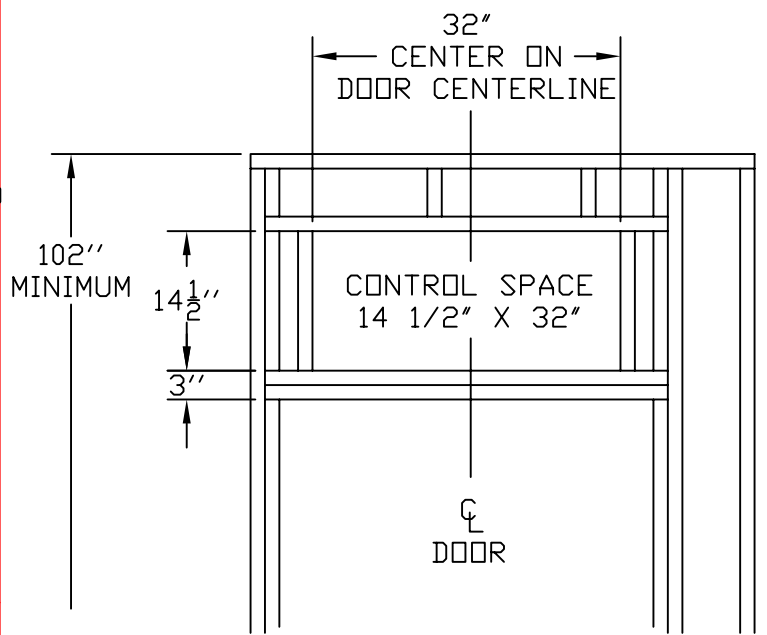


DWG VIEW		SECTION VIEWS		PART NUMBER		REV. DATE	
				80205327		-	
INCLINATOR COMPANY OF AMERICA HARRISBURG, PA		DRAWING TITLE		DRAWING NO.		-	
		TYPICAL LX		-		-	
PAGE:	DRAWN BY:	DWG. DATE	JOB OR APP.#	DEALER P.O.#	DWG. SCALE	REV. LEVEL(1-3)	
3/5	J.PETTYJOHN	02/25/2008	-	-	1:24	-	



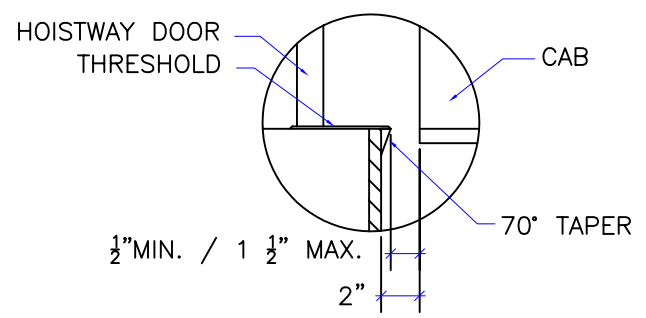
NOTE:
 WHEN STUD AND SHEETROCK CONSTRUCTION IS USED ON THE RAIL BRACKET SUPPORT WALL DBL 2 X 6 STUDING IS NEEDED TO MOUNT THE RAIL BRACKETS. DO NOT USE METAL STUDS.

RAIL DETAIL



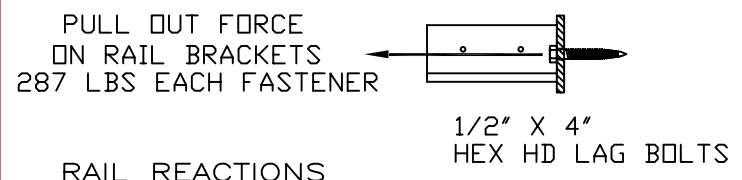
NOTE:
 CONTROL SPACE MUST BE SQUARE AND TO SIZE. GIVENDIMENSIONS ARE MINIMUM SIZE AND MZY BE UP TO 1/8\"/>

UPPER DOOR OVERHEAD FRAMING DETAIL

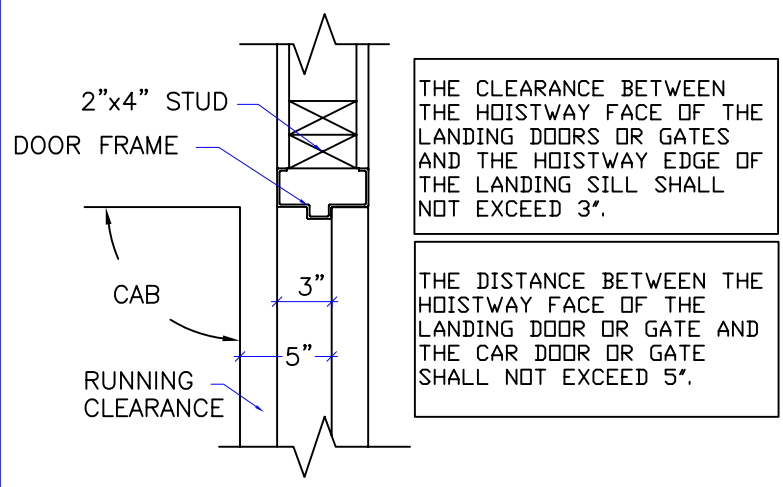
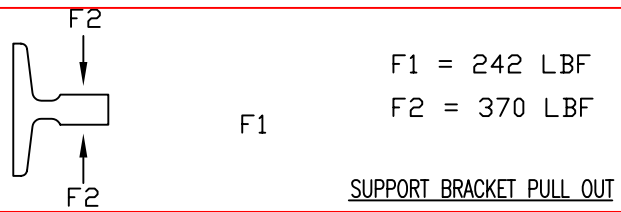


DOOR SILLS TO BE INSTALLED BY G.C. AFTER LIFT SUPPLIER HAS INSTALLED A RUNNING PLATFORM. SILL TO BE BROUGHT OUT TO NOT LESS THAN 1/2\"/>

SILL DETAIL



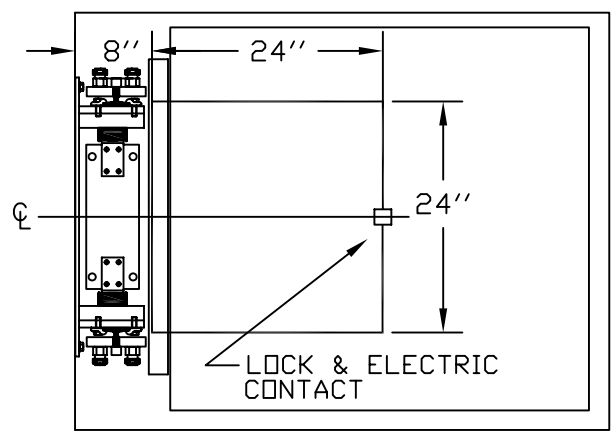
RAIL REACTIONS



THE CLEARANCE BETWEEN THE HOISTWAY FACE OF THE LANDING DOORS OR GATES AND THE HOISTWAY EDGE OF THE LANDING SILL SHALL NOT EXCEED 3\"/>

THE DISTANCE BETWEEN THE HOISTWAY FACE OF THE LANDING DOOR OR GATE AND THE CAR DOOR OR GATE SHALL NOT EXCEED 5\"/>

DOOR FRAME DETAIL



OPTIONAL ACCESS HATCH

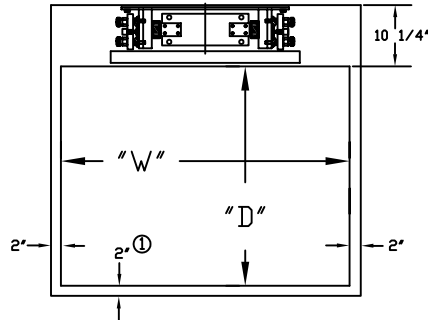
DWG VIEW DETAILS, DATA, CODES		PART NUMBER 80205327		REV.DATE -	
DRAWING TITLE TYPICAL LX		DRAWING NO. -		REV.LEVEL(1-3) -	
PAGE: 4/5	DRAWN BY: J.PETTYJOHN	DWG. DATE 02/25/2008	JOB OR APP.# -	DEALER P.O.# -	DWG. SCALE 1:24



1. EACH RAIL BRACKET FASTENER SHALL PROVIDE A MINIMUM PULL OUT OF 287 LBS.
2. RAIL BRACKET SPACING SHALL BE DETERMINED BY THE MANUFACTURER.
3. RAIL FASTENING MUST BE ABLE TO SUPPORT THE LOADS IMPOSED. SEE RAIL REACTIONS AND SUPPORT BRACKET PULLOUTS ON MAIN BODY OF DRAWING BRACKETS ARE PRE-DRILLED.
4. PIT FLOOR SHALL BE CONSTRUCTED TO WITHSTAND AN IMPACT LOAD OF 3123 LBS.

MAXIMUM SIZE OF CAR 15 FT. SQ. (NET)
 MAXIMUM "D" DIMENSION OF CAR: 44"
 MINIMUM "W" DIMENSION OF CAR: 42"^①
 MINIMUM PIT DEPTH: 8"

① "W" DIMENSIONS LESS THAN 48"
 REQUIRE 1" ADDITIONAL CLEARANCE
 OPPOSITE THE RAIL.

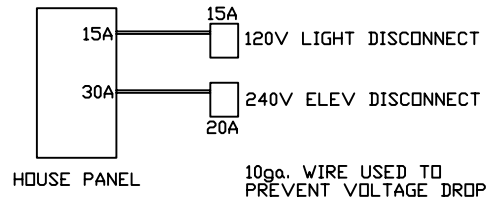


TECHNICAL DATA

1. NOTICE TO ELECTRICAL CONTRACTOR:

- * ALL ELECTRICAL WIRING MUST BE DONE BY A JOURNEYMAN MECHANIC AND MUST MEET ALL NATIONAL, STATE, AND LOCAL CODES.
- * BRING (3) #10 W/GND FROM ELEVATOR DISCONNECT SWITCH LOCATED NEAR RESIDENCE INCOMING POWER PANEL (240V, NEUTRAL, GROUND) TO THE TOP OF THE HOISTWAY. DISCONNECT IS SUPPLIED BY OTHERS AND MUST BE LOCKABLE.
- * BRING (2) #12 W/GND FROM A SEPARATE DEDICATED DISCONNECT NEAR THE RESIDENCE INCOMING POWER PANEL FOR THE CAR LIGHT, UTILITY LIGHT & GFI RECEPTACLE TO THE TOP OF THE HOISTWAY. UTILITY LIGHT, GFI RECEPTACLE, AND LOCKABLE DISCONNECT TO BE SUPPLIED BY OTHERS.
- * REQUIRED LOW VOLTAGE WIRING IS SUPPLIED BY MANUFACTURER. ALL EXTENSIONS ADDITIONS, ETC. SHALL BE DONE WITH THE SAME SIZE AND TYPE OF WIRE AS ORIGINALLY SUPPLIED BY THE MANUFACTURER.

2H.P. MOTOR 208/240 VOLTS 3 PHASE
 60 CYCLE (RUNS ON SINGLE PHASE)
 6.1 AMPS RUN
 30 AMP MAIN LINE BREAKER



2. NOTICE TO G.C.

- * NO OTHER WIRING OR PIPING NOT PART OF THE ELEVATOR SYSTEM SHALL BE PLACED IN THE HOISTWAY.
- * SWING TYPE SHAFT DOORS WITH LATCHING HARDWARE TO BE SUPPLIED BY OTHERS.
- * PROVIDE A 24" X 24" ACCESS HATCH IN THE CEILING OF THE HOISTWAY TO FACILITATE INSTALLATION OF MACHINE AND EQUIPMENT. (SEE HATCH ACCESS PANEL) ACCESS HATCH MUST HAVE FLAME SPREAD RATE EQUIVELANT OR GREATER AS THE CEILING OF THE HOISTWAY.
- * LOW LYING AREAS MUST PROVIDE ADEQUATE DRAINAGE IN THE PIT TO PREVENT WATER FROM ACCUMULATING.

3. NOTICE TO INSTALLER (MANDATORY EQUIPMENT)

- * A TELEPHONE LINE SHALL BE SUPPLIED TO THE TOP OF THE HOISTWAY AND SHALL BE CONNECTED TO A 24 HOUR CENTRAL EXCHANGE.
- * ALL MEANS FOR ACCESS TO EQUIPMENT OR HOISTWAY SHALL BE PROVIDED WITH A LOCK AND ELECTRICAL CONTACT. ALL SHAFT DOORS MUST BE INTERLOCKED.

DWG VIEW TECHNICAL DATA, ELEVATOR NOTES	PART NUMBER 80205327	REV. DATE - - -
DRAWING TITLE TYPICAL LX	DRAWING NO. -	
PAGE: 5/5	DRAWN BY: J. PETTYJOHN	DWG. DATE 02/25/2008
JOB OR APP.# -	DEALER P.O.# -	DWG. SCALE 1:24
		REV. LEVEL (1-3) -